

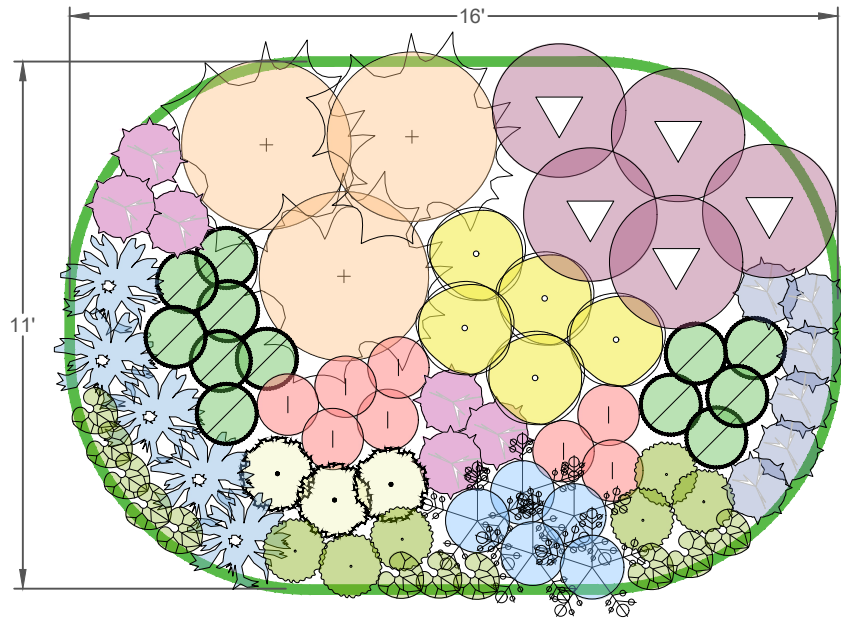


NATIVE GARDEN TEMPLATE

SHADE + 150 SF

Designed by:
Metro Blooms
651.699.2426
P.O. Box 17099
Minneapolis, MN 55417
www.metroblooms.org

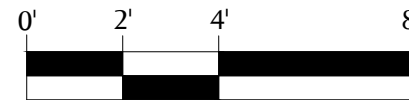
PLANTING PLAN



PLANT LIST

ICON	QTY	COMMON NAME	SCIENTIFIC NAME	HT	SPACING	BLOOM
	11	Wild Ginger	<i>Asarum canadense</i>	6"	1'	Apr-May
	5	Jacob's Ladder	<i>Polemonium reptans</i>	1'	1'	Apr-June
	6	Virginia Bluebells	<i>Mertensia virginica</i>	1'-2'	1'	Apr-May
	6	Wild Geranium	<i>Geranium maculatum</i>	1'-2'	1'	May-June
	6	Maidenhair Fern	<i>Adiantum pedatum</i>	1'-2'	18"	n/a
	5	Big-Leaved Aster	<i>Aster macrophyllus</i>	1'-2'	18"	Aug-Sept
	3	Tall Thimbleweed	<i>Anemone virginiana</i>	1'-2'	18"	June-Aug
	5	Zig Zag Goldenrod	<i>Solidago flexicaulis</i>	1'-3'	18"	Aug-Oct
	12	Bottlebrush Grass	<i>Elymus hystrix</i>	2'-3'	1'	July-Sept
	8	Columbine	<i>Aquilegia canadensis</i>	2'-3'	1'	May-July
	5	Rose Turtlehead	<i>Chelone lyonii 'Hot Lips'</i>	2'-4'	2'	July-Sept
	3	Culver's Root	<i>Veronicastrum virginicum</i>	3'-5'	2'	July-Sept

GRAPHIC SCALE



1 inch = 4 feet

PLANTING NOTES

- If your native garden is a different shape than shown on this plan, that's ok. These notes will help you place the plants in the right spots.
- Consider where you will view the garden from when placing plants.
- Plant in clusters or groups of 3 or more.
- Put shorter plants near the outer edge.
- Put taller plants near the back or center.
- Use the plant list as a guide for heights. It is organized from shortest to tallest plants.
- Have fun. Don't stress. Enjoy your new garden and pollinator guests!

PLANT PHOTOS

