

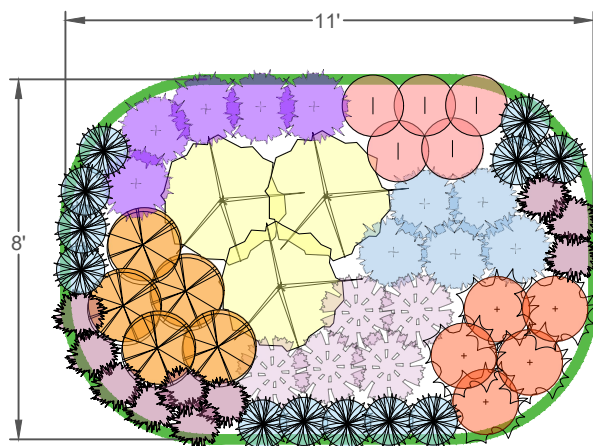


# NATIVE GARDEN TEMPLATE

## SUNNY + 75 SF

Metro Blooms  
651.699.2426  
P.O. Box 17099  
Minneapolis, MN 55417  
www.metroblooms.org

### PLANTING PLAN



### PLANT LIST

ICON	QTY	COMMON NAME	SCIENTIFIC NAME	HT	SPACING	BLOOM
	10	Prairie Smoke	Geum triflorum	6"-1'	1'	May-July
	12	Wild Lupine	Lupinus perennis	1'-2'	1'	May-July
	5	Butterfly Weed	Asclepias tuberosa	1'-2.5'	18"	June-Aug
	5	Purple Prairie Clover	Dalea purpurea	1'-3'	18"	July-Sept
	5	Black-eyed Susan	Rudbeckia hirta	1'-3'	18"	June-Oct
	5	Columbine	Aquilegia canadensis	2'-3'	1'	May-July
	5	Rough Blazing Star	Liatris aspera	2'-3'	18"	July-Oct
	5	Little Bluestem	Schizachyrium scoparium	2'-4'	18"	Aug-Sept
	3	Showy Goldenrod	Solidago speciosa	3'-5'	2'	Aug-Oct

### GRAPHIC SCALE



1 inch = 4 feet

### PLANTING NOTES

- If your native garden is a different shape than shown on this plan, that's ok. These notes will help you place the plants in the right spots.
- Consider where you will view the garden from when placing plants.
- Plant in clusters or groups of 3 or more.
- Put shorter plants near the outer edge.
- Put taller plants near the back or center.
- Use the plant list as a guide for heights. It is organized by shortest to tallest plants.
- Have fun. Don't stress. Enjoy your new garden and pollinator guests!

### PLANT PHOTOS

