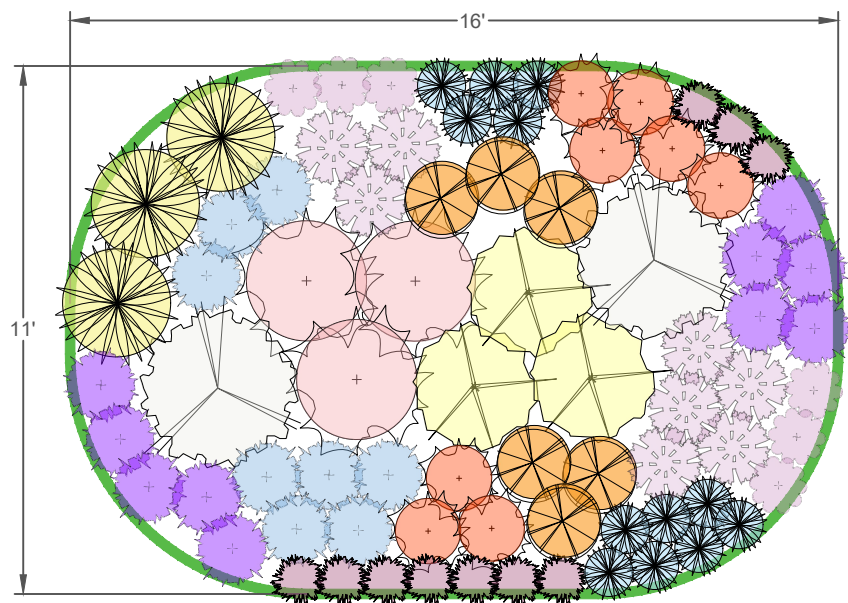


NATIVE GARDEN TEMPLATE

SUNNY + 150 SF

Metro Blooms
651.699.2426
P.O. Box 17099
Minneapolis, MN 55417
www.metroblooms.org

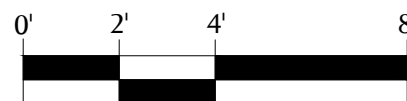
PLANTING PLAN



PLANT LIST

ICON	QTY	COMMON NAME	SCIENTIFIC NAME	HT	SPACING	BLOOM
	6	Pink Pussytoes	<i>Antennaria dioica rubra</i>	6"	1'	Apr-June
	10	Prairie Smoke	<i>Geum triflorum</i>	6"-1'	1'	May-July
	12	Wild Lupine	<i>Lupinus perennis</i>	1'-2'	1'	May-July
	8	Butterfly Weed	<i>Asclepias tuberosa</i>	1'-2.5'	18"	June-Aug
	3	Cream False Indigo	<i>Baptisia bracteata</i>	2'-2.5'	2'	May-June
	10	Purple Prairie Clover	<i>Dalea purpurea</i>	1'-3'	18"	July-Sept
	6	Black-eyed Susan	<i>Rudbeckia hirta</i>	1'-3'	18"	June-Oct
	8	Rough Blazing Star	<i>Liatris aspera</i>	2'-3'	18"	July-Oct
	8	Little Bluestem	<i>Schizachyrium scoparium</i>	2'-4'	18"	Aug-Sept
	2	New Jersey Tea	<i>Ceanothus americanus</i>	3'-4'	3'	June-Aug
	3	Showy Goldenrod	<i>Solidago speciosa</i>	3'-5'	2'	Aug-Oct
	3	Sweet Joe Pye Weed	<i>Eupatorium purpureum</i>	4'-7'	2'	July-Sept

GRAPHIC SCALE



1 inch = 4 feet

PLANTING NOTES

- If your native garden is a different shape than shown on this plan, that's ok. These notes will help you place the plants in the right spots.
- Consider where you will view the garden from when placing plants.
- Plant in clusters or groups of 3 or more.
- Put shorter plants near the outer edge.
- Put taller plants near the back or center.
- Use the plant list as a guide for heights. It is organized from shortest to tallest plants.
- Have fun. Don't stress. Enjoy your new garden and pollinator guests!

PLANT PHOTOS

