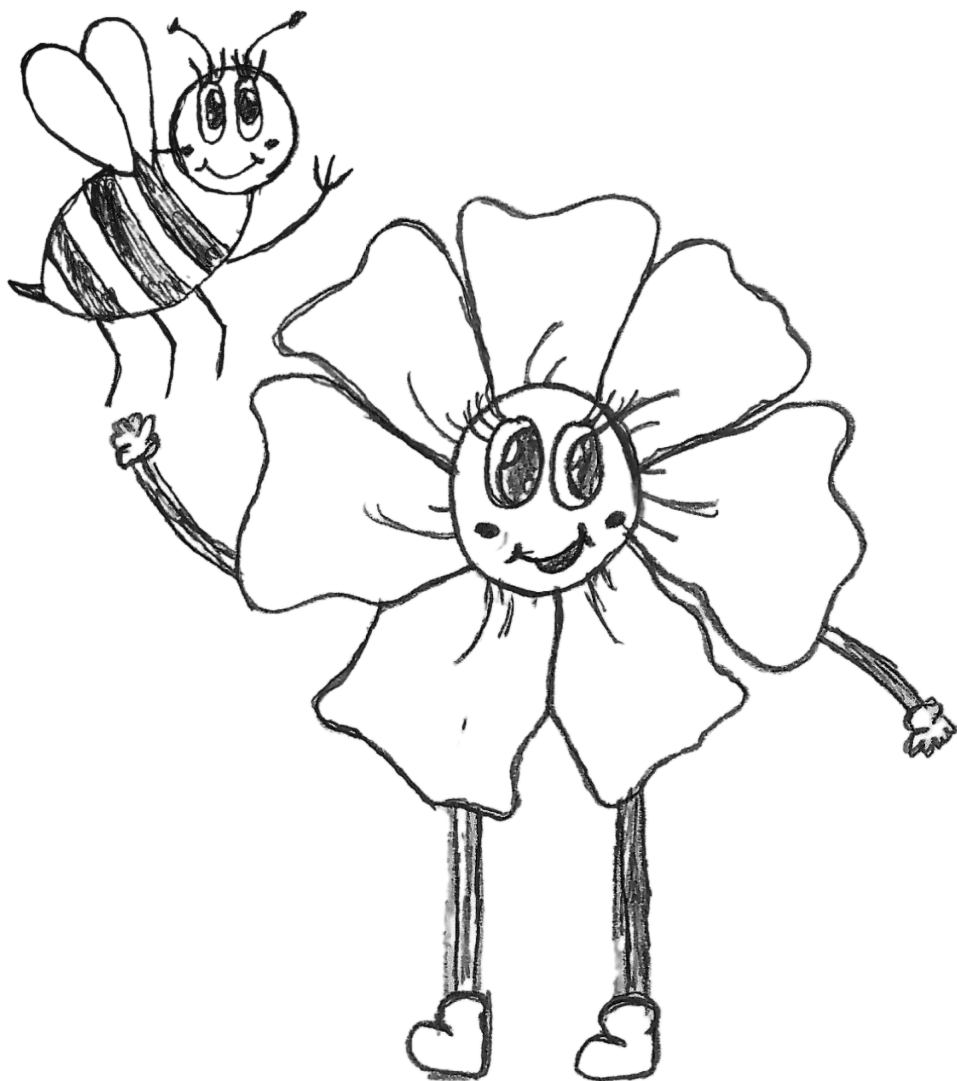
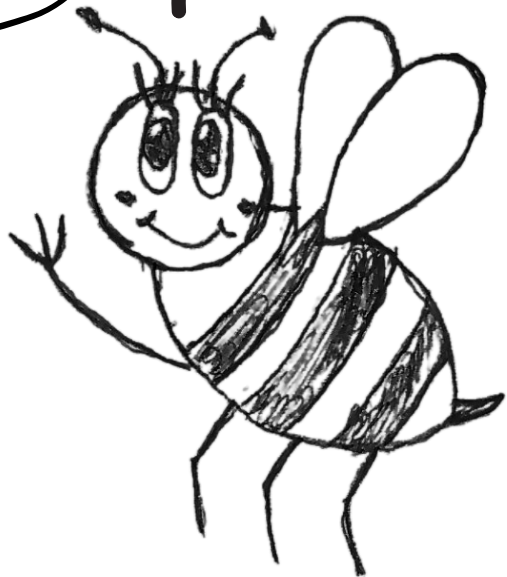


***ADVENTURES OF
REX
THE RUSTY
PATCHED BUMBLE
BEE***



Hi, I'M REX THE RUSTY
PATCHED BUMBLE BEE!
SWEET AS CAN BE!



BEEES DON'T WANT TO HURT
YOU, THEY ARE CURIOUS
ABOUT YOU! THEY MAY
CONFUSE YOU FOR A
FLOWER IF YOU SMELL
SWEET OR ARE WEARING
BRIGHT COLORS.

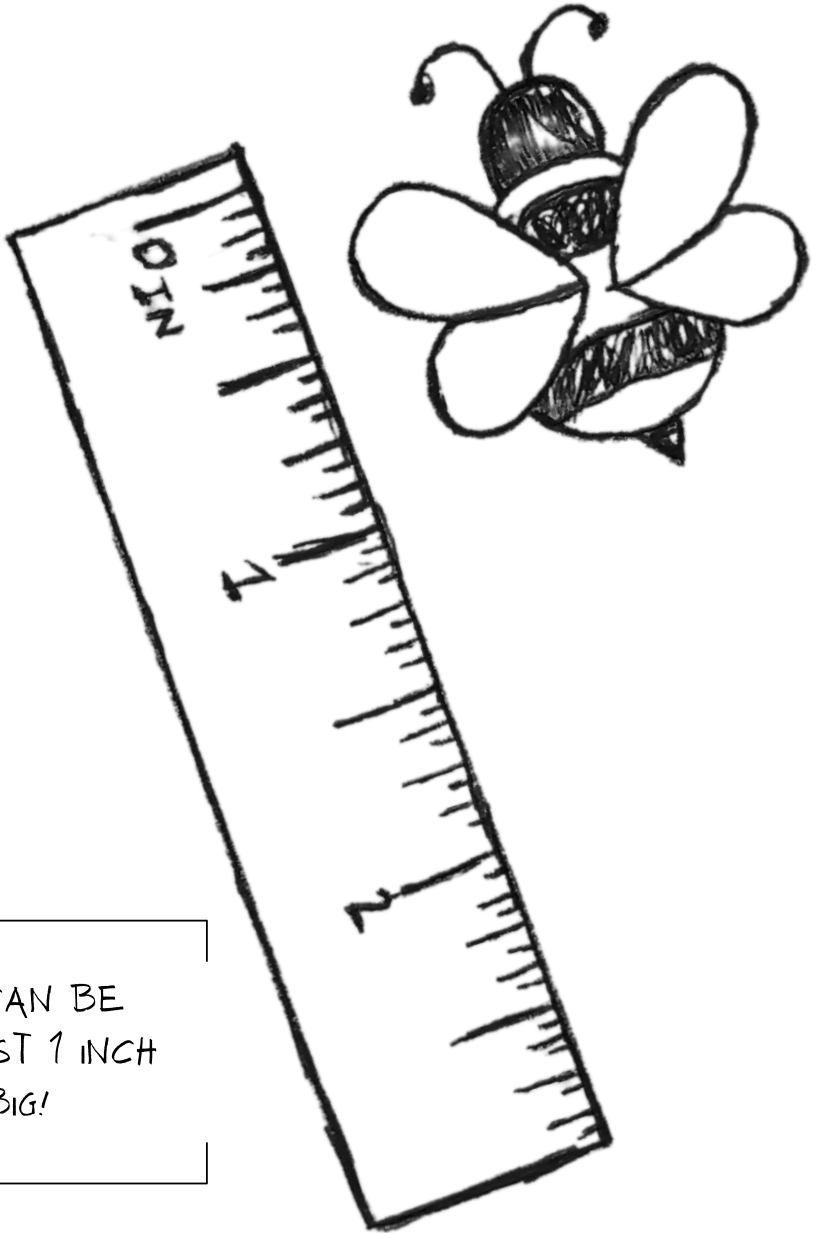
I FLY UP HIGH THROUGH THE TREES,
PRAIRIES, AND SKY.



I FIND MY FOOD IN
GRASSLANDS,
PRAIRIES, AND
MARSHES.

I'M FUZZY, KIND OF BIG, ORANGE AND
YELLOW

DON'T BE AFRAID COME SAY "HELLO"!



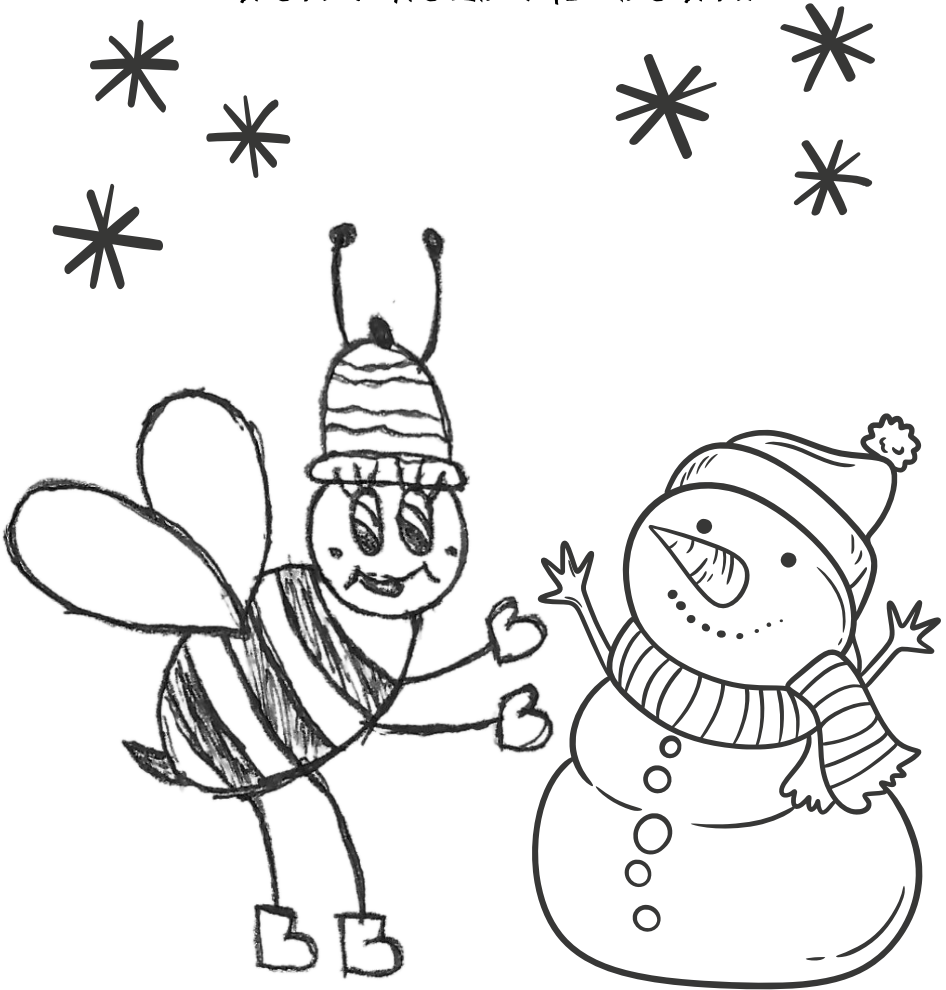
I CAN BE
ALMOST 1 INCH
BIG!

I LIVE IN THE GROUND, 1-4 FEET UNDER IS
WHERE I CAN BE FOUND.



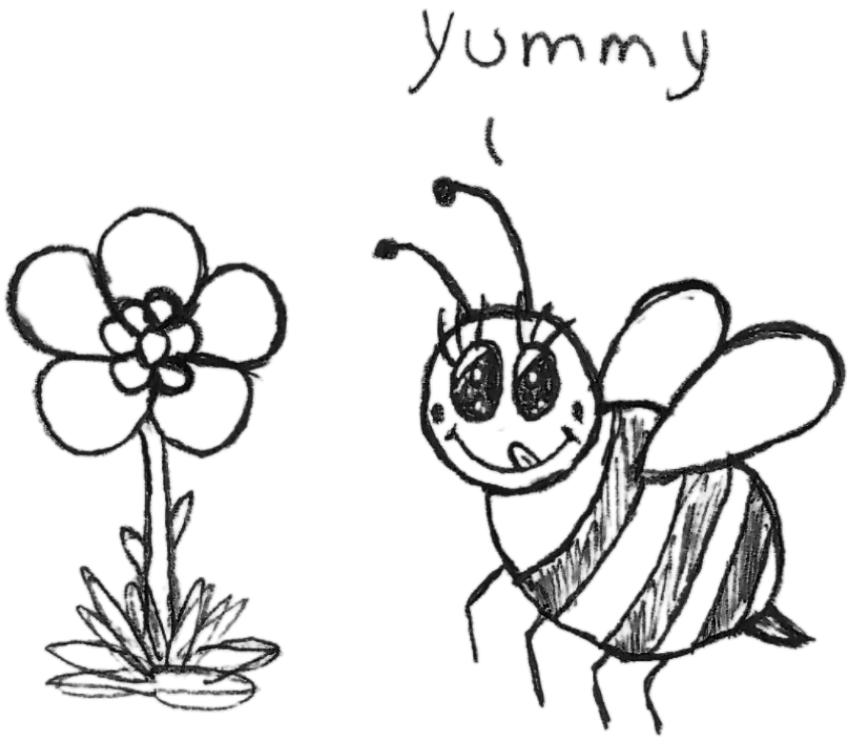
I BUILD MY HOME
IN THE DIRT AND
REST INSIDE ALL
WINTER.

I AM VERY STRONG, A LITTLE COLD
WON'T HOLD ME DOWN!



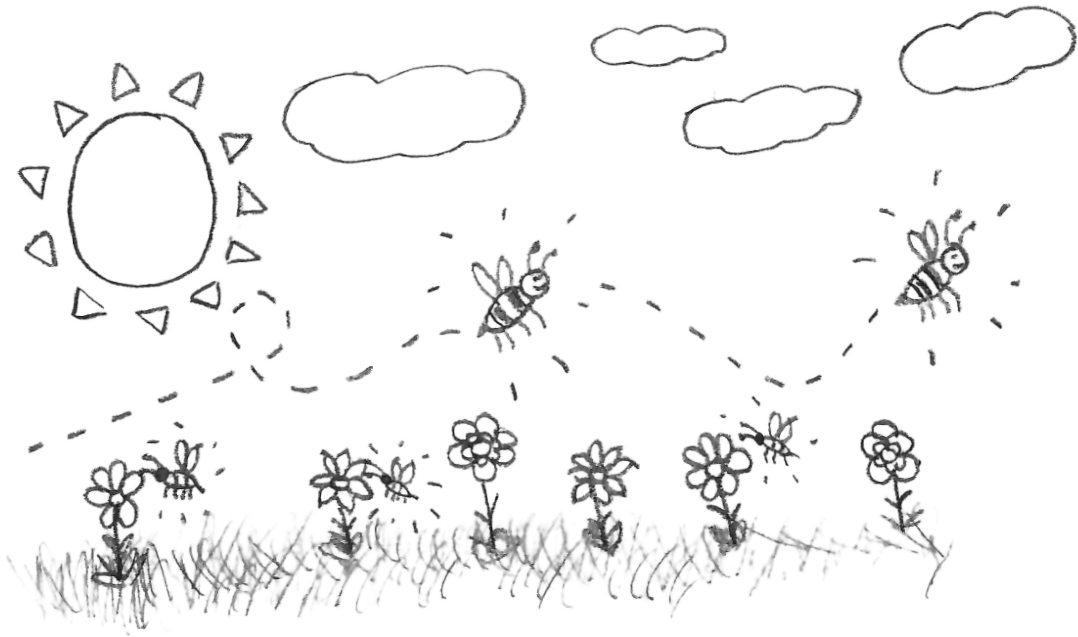
I CAN SURVIVE COLD
TEMPERATURES THAT
OTHER BEES CAN'T. OUR
QUEEN BEE HIBERNATES
UNDERGROUND DURING
WINTER.

THE FLOWERS I EAT NEED TO BE SHORT
AND PETITE.



I GET MY FOOD FROM
FLOWERS WITH SHORT
PETALS BECAUSE MY
TONGUE IS SO SHORT!

I BUZZ AND SHAKE, SPENDING MANY
HOURS COLLECTING POLLEN FROM
LOTS OF FLOWERS.



I VIBRATE MY
BODY TO COLLECT
POLLEN FROM
FLOWERS.

BUT THE WORLD IS SCARY, SINCE
2017 I'VE BEEN WARY...



I BECAME
ENDANGERED THAT
YEAR

WE'RE HERE TO CHANT
PLANT NATIVE PLANTS!

WE CAN DO IT!
LET'S COMMIT!

DON'T USE PESTICIDE!
MAKE SURE I SURVIVE!

SAVE THE BEES
IT'S UP TO YOU AND ME!



