

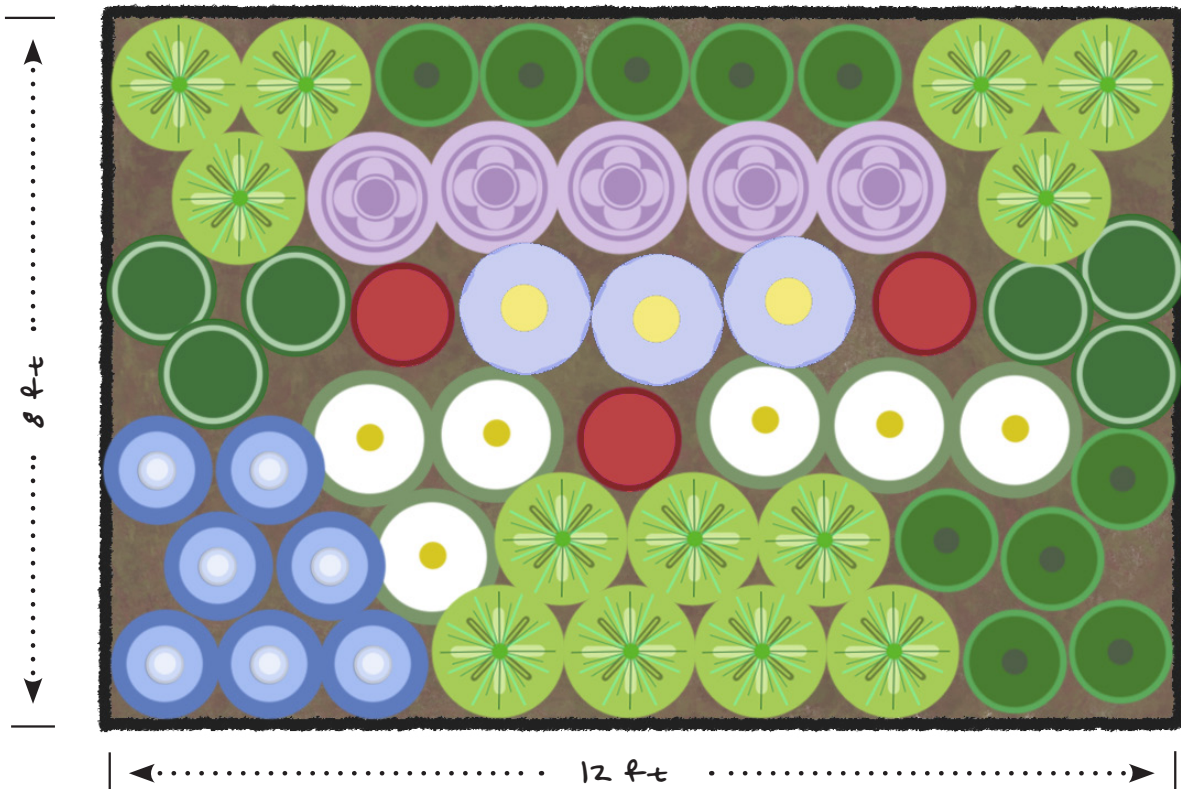
Pollinator Garden Template For Shady & Dry Sites











These Minnesota native perennial plants prosper in moderately dry soils with less than 4 hours of direct sunlight per day.

Planting Notes & Recommendations

- If your garden is a different shape or size than this template, that's ok! These notes will help you to arrange plants appropriately.
- Plant species in clusters of three or more individuals and repeat these clusters across the garden.
- Consider which directions your garden will be viewed from.
 - » Keep shorter species towards the edge or front of the garden bed where they maintain visibility.
 - » Use taller species as a backdrop.

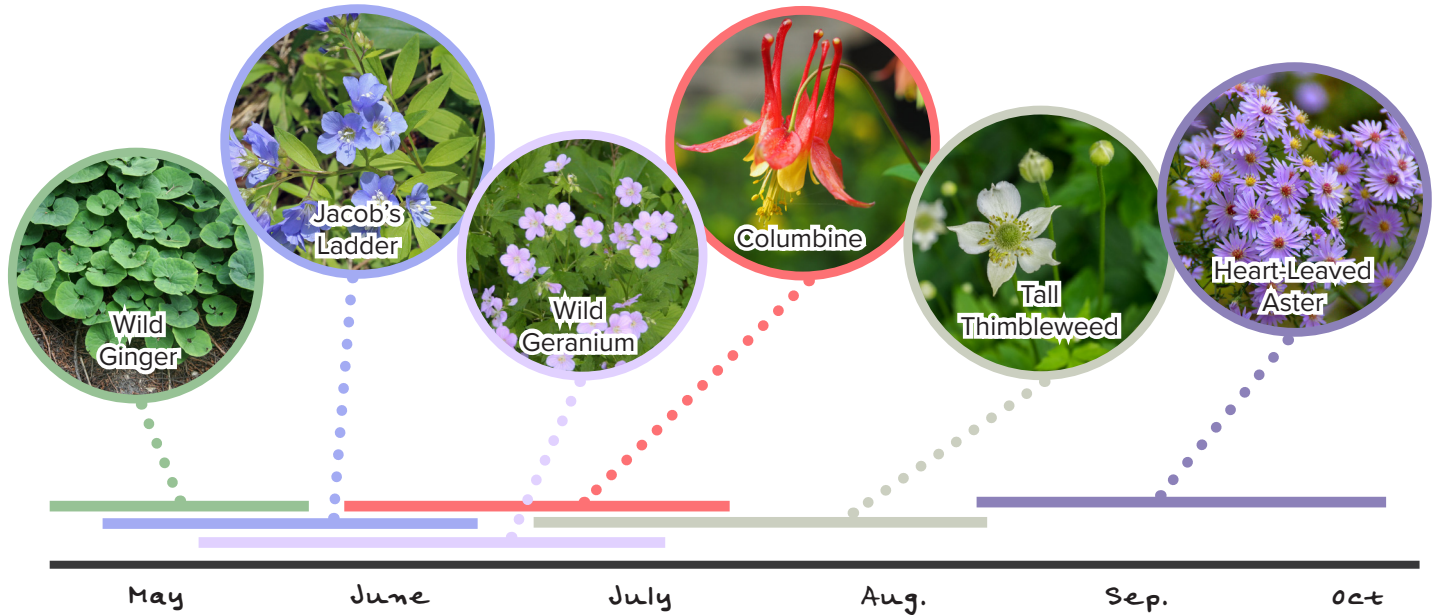


	Tall thimbleweed <i>Anemone virginiana</i>	3 ft Height 1.5 ft Spacing
	Columbine <i>Aquilegia canadensis</i>	3 ft Height 1.5 ft Spacing
	Wild ginger <i>Asarum canadense</i>	0.5 ft Height 1 ft Spacing
	Heart-leaved aster <i>Aster cordifolius</i>	3 ft Height 1.5 ft Spacing

	Lady fern <i>Athyrium filix-femina</i>	1 ft Height 1 ft Spacing
	Pennsylvania sedge <i>Carex pensylvanica</i>	1 ft Height 1 ft Spacing
	Wild geranium <i>Geranium maculatum</i>	1.5 ft Height 1.5 ft Spacing
	Jacob's ladder <i>Polemonium reptans</i>	1 ft Height 1 ft Spacing

Timing of Blooms

The garden template combines species of native wildflowers with staggered bloom times from spring to early fall. This provides pollinators with crucial pollen and nectar sources throughout the entire season.



Species Substitutes

0 to 2 Ft in Height

Wild strawberry - *Fragaria virginiana*
Sharp-lobed hepatic - *Hepatica acutiloba*
Ivory sedge - *Carex eburnea*
Rosy sedge - *Carex rosea*
Wild blue phlox - *Phlox divaricata*

2 to 3 Ft in Height

Early meadow rue - *Thalictrum dioicum*
Starry Solomon's plume - *Maianthemum stellatum*
Zig-zag goldenrod - *Solidago flexicaulis*
Short's aster - *Symphotrichum shortii*

Check out Blue Thumb's Plant Finder tool for more information on these and other native Minnesota native plants!
<https://bluethumb.org/plantfinder/>

In partnership with:

