

Pollinator Garden Template

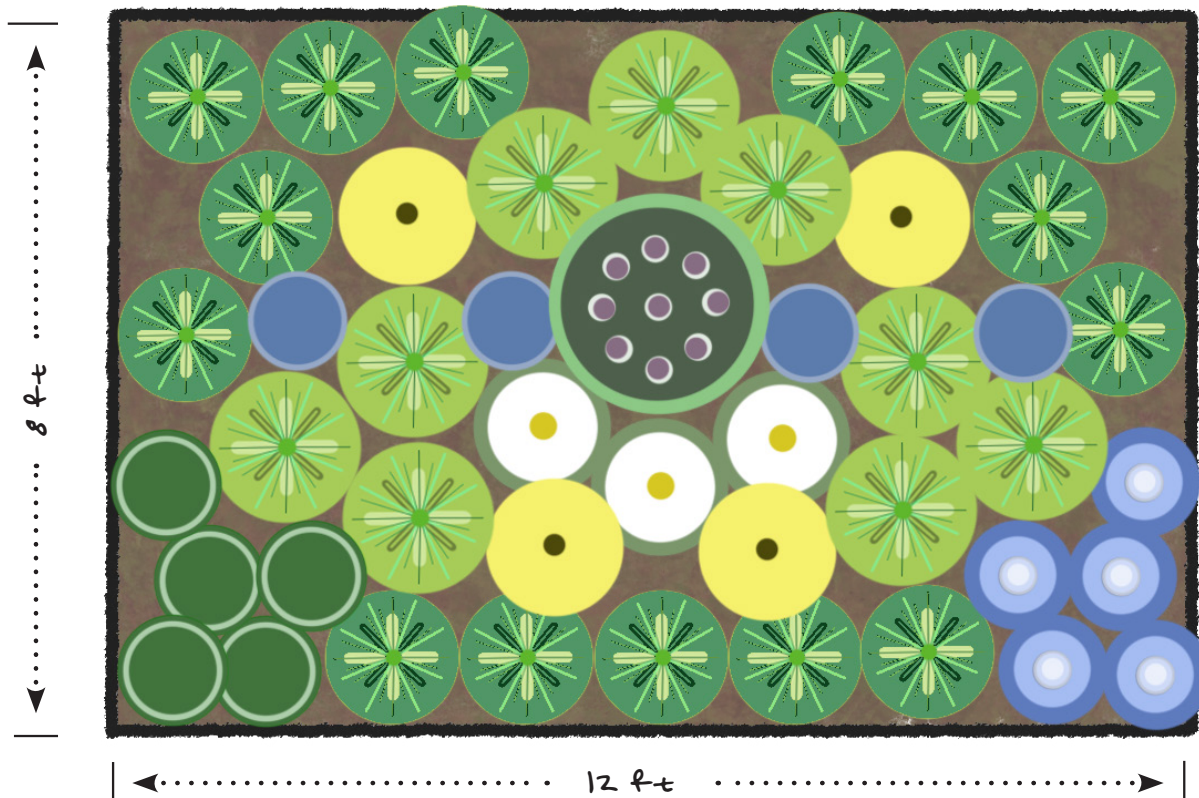
For Shady & Moist Sites









These Minnesota native perennial plants prosper in moderately moist soils with less than 4 hours of direct sunlight per day.



Planting Notes & Recommendations

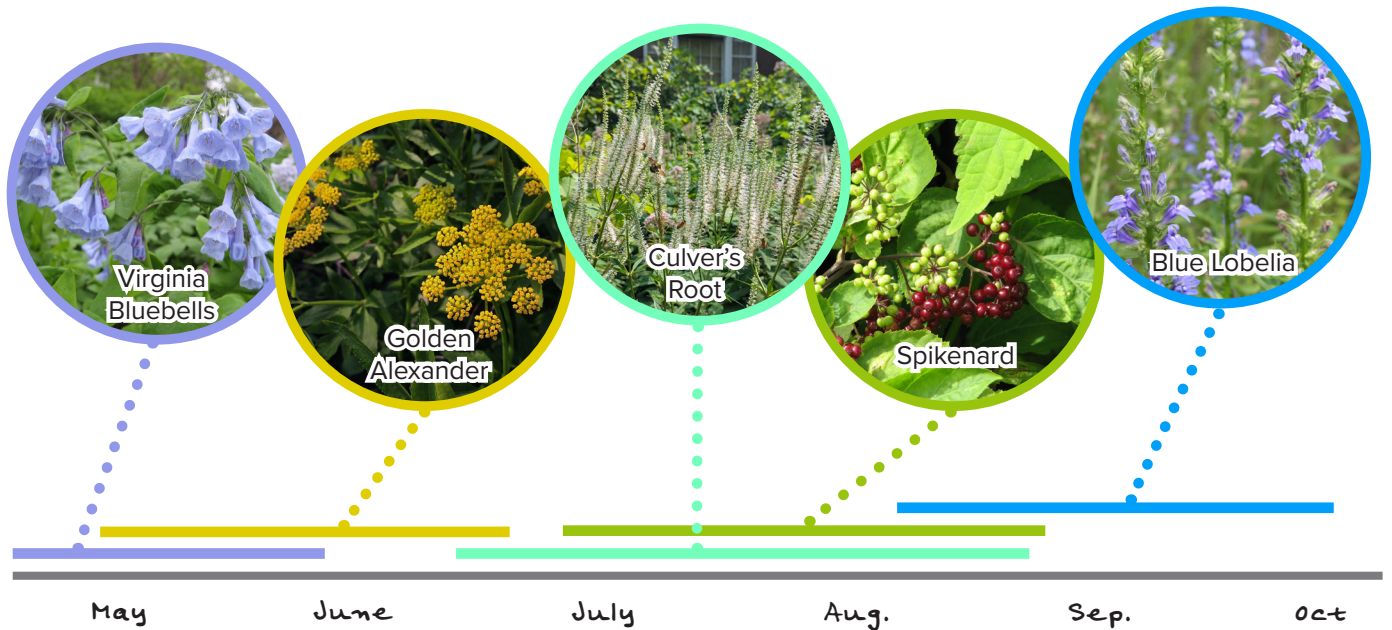
- If your garden is a different shape or size than this template, that's ok! These notes will help you to arrange plants appropriately.
- Plant species in clusters of three or more individuals and repeat these clusters across the garden.
- Consider which directions your garden will be viewed from.
 - » Keep shorter species towards the edge or front of the garden bed where they maintain visibility.
 - » Use taller species as a backdrop.



	Maidenhair fern <i>Adiantum pedatum</i>	2 ft Height 1 ft Spacing		Blue lobelia <i>Lobelia siphilitica</i>	1 ft Height 1 ft Spacing
	Spikenard <i>Aralia racemosa</i>	4 ft Height 3 ft Spacing		Virginia bluebells <i>Mertensia virginica</i>	1 ft Height 1 ft Spacing
	Palm sedge <i>Carex muskingumensis</i>	3 ft Height 1.5 ft Spacing		Culver's root <i>Veronicastrum virginicum</i>	1.5 ft Height 1.5 ft Spacing
	Long beaked sedge <i>Carex spregelii</i>	2 ft Height 1.5 ft Spacing		Golden Alexander <i>Zizia aurea</i>	1 ft Height 1 ft Spacing

Timing of Blooms

The garden template combines species of native wildflowers with staggered bloom times from spring to early fall. This provides pollinators with crucial pollen and nectar sources throughout the entire season.



Species Substitutes

0.5 to 2 Ft in Height

Eastern star sedge - *Carex radiata*

Wild blue phlox - *Phlox divaricata*

Large-flowered trillium - *Trillium grandiflorum*

Solomon's plume - *Maianthemum racemosum*

Jack-in-the-Pulpit - *Arisaema triphyllum*

2 to 3 Ft in Height

Blue cohosh - *Caulophyllum thalictroides*

Heart-leaved skullcap - *Scutellaria ovata*

Gray sedge - *Carex grayi*

4 to 6 Ft in Height

Tall bellflower - *Campanula americana*

Sweet Joe Pye weed - *Eutrochium purpureum*

Check out Blue Thumb's Plant Finder tool for more information on these and other native Minnesota native plants!

<https://bluethumb.org/plantfinder/>

In partnership with:

