

Pollinator Garden Template

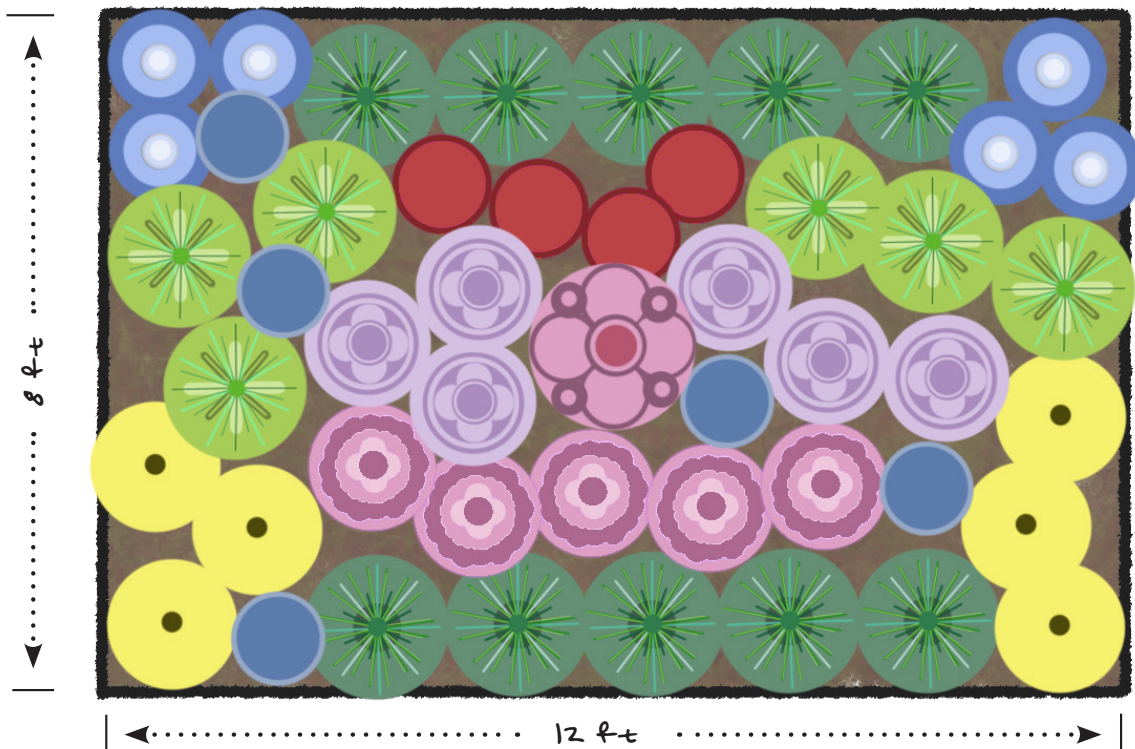
For Sunny & Moist Sites

These Minnesota native perennial plants prosper in moderately moist soils with more than 4 hours of direct sunlight per day.



Planting Notes & Recommendations

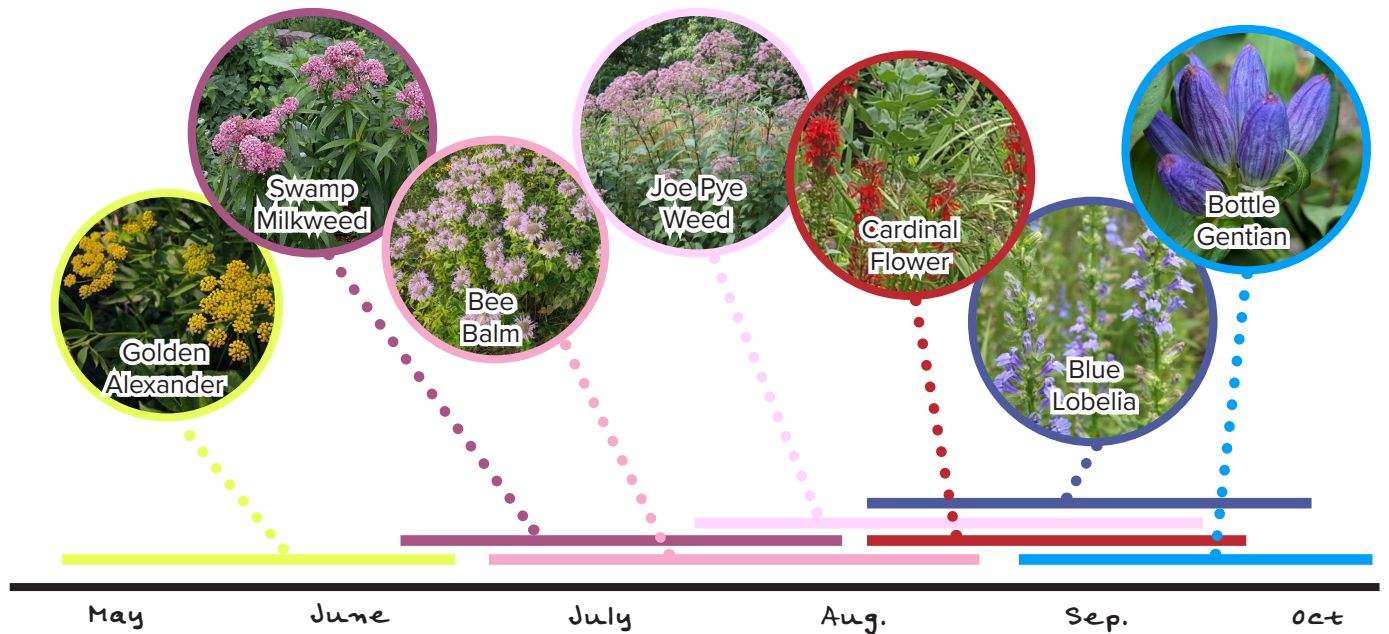
- If your garden is a different shape or size than this template, that's ok! These notes will help you to arrange plants appropriately.
- Plant species in clusters of three or more individuals and repeat these clusters across the garden.
- Consider which directions your garden will be viewed from.
 - » Keep shorter species towards the edge or front of the garden bed where they maintain visibility.
 - » Use taller species as a backdrop.



	Swamp milkweed <i>Asclepias incarnata</i>	4 ft Height 1.5 ft Spacing		Cardinal flower <i>Lobelia cardinalis</i>	3 ft Height 1 ft Spacing
	Gray sedge <i>Carex grayi</i>	3 ft Height 1.5 ft Spacing		Blue lobelia <i>Lobelia siphilitica</i>	3 ft Height 1 ft Spacing
	Palm sedge <i>Carex muskingumensis</i>	3 ft Height 1.5 ft Spacing		Bee balm <i>Monarda fistulosa</i>	3 ft Height 1.5 ft Spacing
	Joe Pye weed <i>Eutrochium maculatum</i>	5 ft Height 2 ft Spacing		Golden Alexander <i>Zizia aurea</i>	3 ft Height 1.5 ft Spacing
	Bottle gentian <i>Gentiana andrewsii</i>	2 ft Height 1 ft Spacing			

Timing of Blooms

The garden template combines species of native wildflowers with staggered bloom times from spring to early fall. This provides pollinators with crucial pollen and nectar sources throughout the entire season.



Species Substitutes

0 to 2 Ft in Height

Wild strawberry - *Fragaria virginiana*

Canada anemone - *Anemone Canadensis*

Common wood sedge - *Carex blanda*

Marsh marigold - *Caltha palustris*

2 to 3 Ft in Height

Northern blue flag iris - *Iris versicolor*

Common hop sedge - *Carex lupulina*

3 to 5 Ft in Height

Sneezeweed - *Helenium autumnale*

White wild indigo - *Baptisia alba*

Prairie blazing star - *Liatris pynostachya*

Ironweed - *Vernonia fasciculata*

Check out Blue Thumb's Plant Finder tool for more information on these and other native Minnesota native plants!

<https://bluethumb.org/plantfinder/>

In partnership with:

